



NOW AVAILABLE: MIDDLE AGES BUILDING

120 Wilkinson St.
Syracuse, NY

WASHINGTON ST. PARTNERS

12,500 SF AVAILABLE (DIVISIBLE) REDEVELOPMENT SPACE
3,000 SF AVAILABLE IN OUTPARCEL BUILDING



Property Information:

The General Ice Cream Factory building is located at 112-116 Wilkinson Street and is home to Syracuse's first and oldest craft brewery – The Middle Ages Brewery. The property sits on the edge of Leavenworth Park and consists of 1.5+/- acres with over 85+/- on-site parking spaces.

The neighborhood consists of newly renovated mixed-use buildings as well as single family residential homes creating a unique experience of residential, commercial, and a park setting within the City.



Property Features:

- Home to Middle Ages Brewery
- 85+/- on-site parking spaces
- Located in the Leavenworth Park neighborhood
- Proximity to all major highways, hospitals, Syracuse University and Downtown Syracuse

TENANT LISTINGS



PROPERTY OVERVIEW

67,000 SF building
12,500+/- SF Available 2nd Fl
3,000+/- SF Outparcel Bldg.



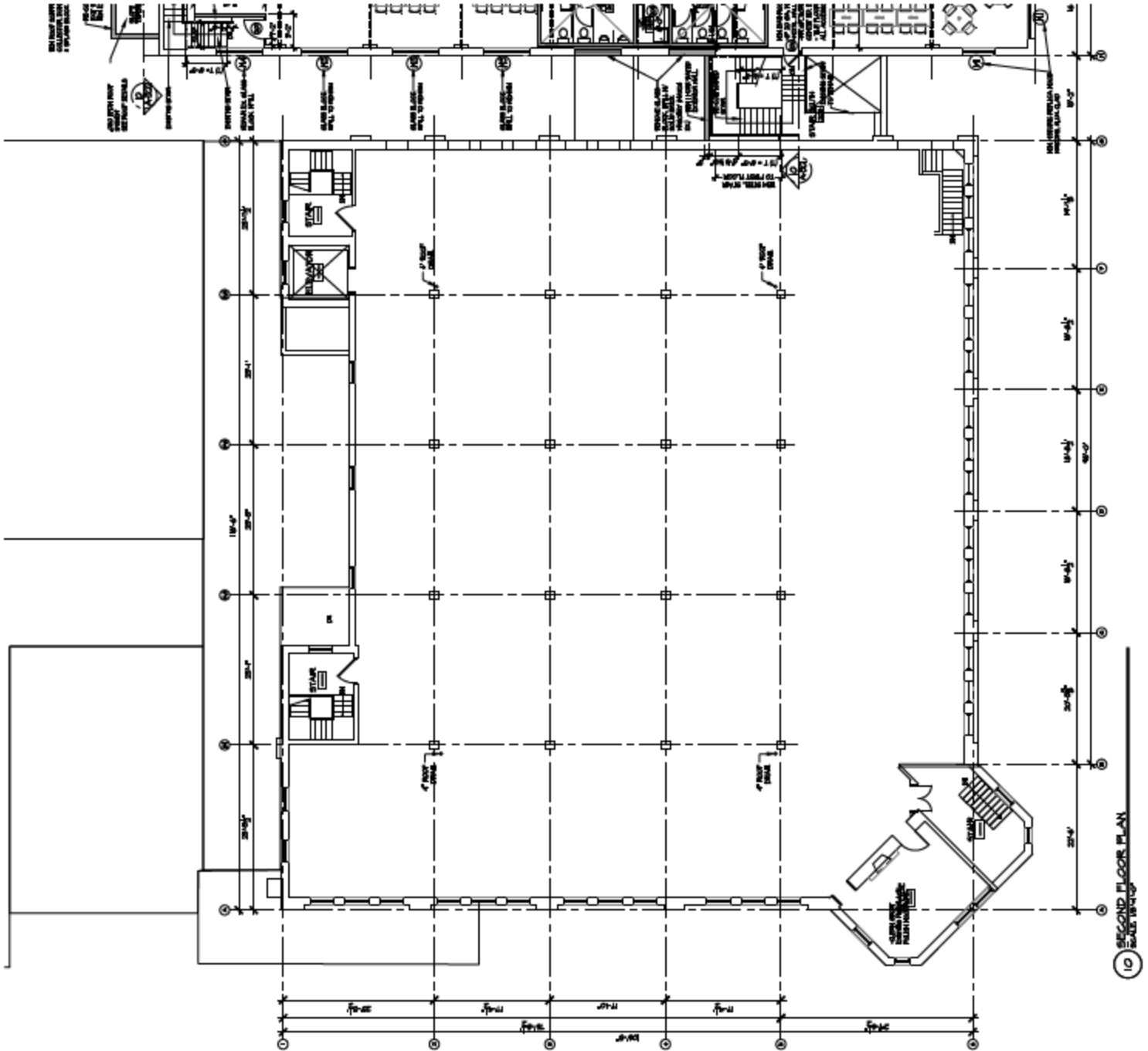
FOR OTHER LEASING OPPORTUNITIES
WashingtonStPartners.com



WASHINGTON ST. PARTNERS CORPORATE OFFICES

120 E. Washington Street, Syracuse, NY 13202
PH 315-426-2624 info@washingtonstpartners.com

NOW AVAILABLE: 2nd Floor 12,500 SF Space
Middle Ages Building



10 SECOND FLOOR PLAN
 SCALE: 1/4" = 1'-0"

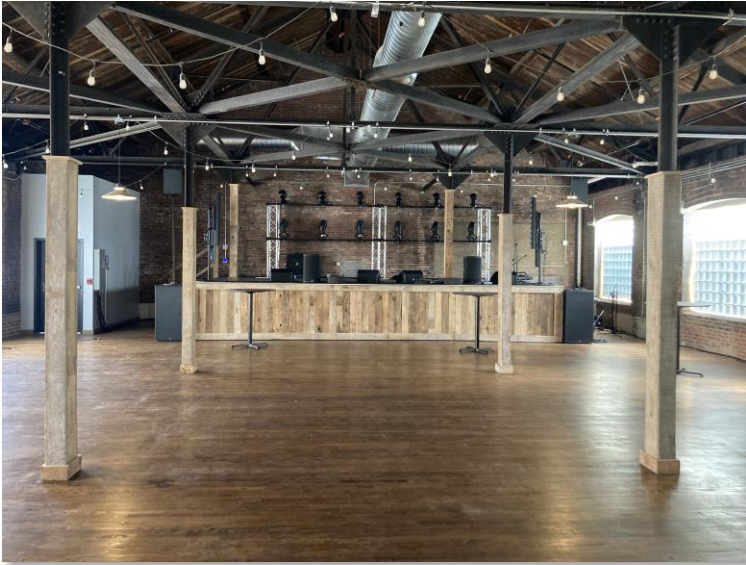
FOR OTHER LEASING OPPORTUNITIES
WashingtonStPartners.com



WASHINGTON ST. PARTNERS CORPORATE OFFICES
 120 E. Washington Street, Syracuse, NY 13202
 PH 315-426-2624 info@washingtonstpartners.com

NOW AVAILABLE:
Middle Ages Building

**Example Space Photos Illustrative Purposes Only*



FOR OTHER LEASING OPPORTUNITIES
WashingtonStPartners.com



WASHINGTON ST. PARTNERS CORPORATE OFFICES
120 E. Washington Street, Syracuse, NY 13202
PH 315-426-2624 info@washingtonstpartners.com