



WASHINGTON ST. PARTNERS

NOW AVAILABLE: Warsaw Shopping Center
Anchored By: Tractor Supply, Save-A-Lot Dollar Tree
Top 11% national visit count to TSC Warsaw

10,000 – 12,000 SF Available



Property Information:

The Warsaw Shopping Center, located in the retail corridor of Warsaw, NY (Wyoming County). Only half mile from Wyoming County Community Health Systems. **Tractor Supply in this center is #7 of 84 in NYS and top 11% nationally in consumer visit counts.**

Tenant Listings



Property Features

- Great visibility
- Generous signage
- High center visit count
- 11,000 cars passing daily
- Over 180 parking spaces
- Lease Incentives available

AVAILABILITY OVERVIEW

- 2,000+/- SF End Cap
- 10,000+/- SF Partial End Cap

ADDRESS

461 N. Main St.
Warsaw, NY

FOR OTHER LEASING OPPORTUNITIES
WashingtonStPartners.com



WASHINGTON ST. PARTNERS CORPORATE OFFICES
120 E. Washington Street, Syracuse, NY 13202
PH 315-426-2624 info@washingtonstpartners.com

NOW AVAILABLE: WARSAW SHOPPING CENTER

AVAILABLE: 10,000 - 12,000+/- SF

SITE PLAN

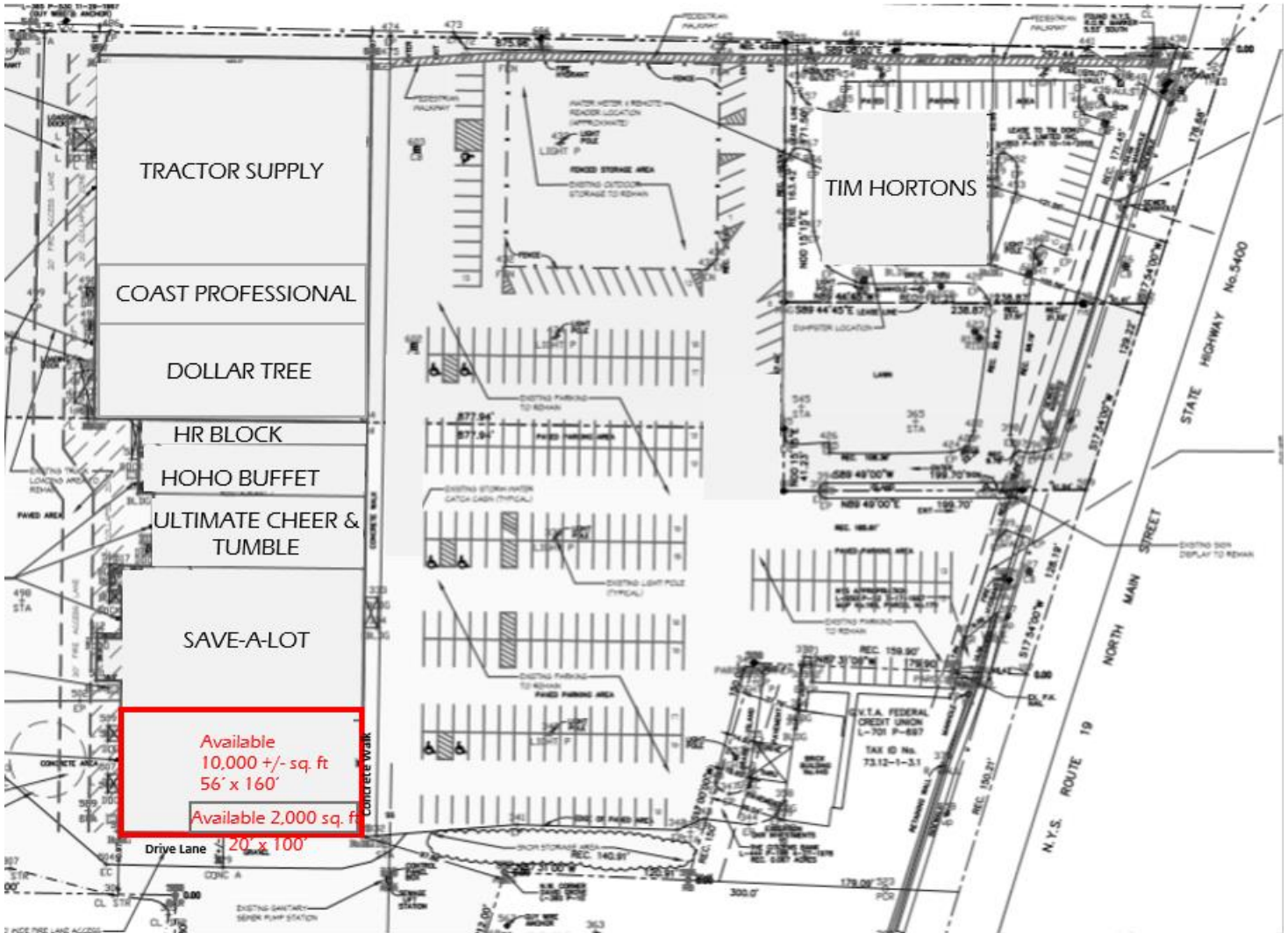


FOR OTHER LEASING OPPORTUNITIES
WashingtonStPartners.com



WASHINGTON ST. PARTNERS CORPORATE OFFICES
120 E. Washington Street, Syracuse, NY 13202
PH 315-426-2624 info@washingtonstpartners.com

NOW AVAILABLE: WARSAW SHOPPING CENTER
AVAILABLE: 10,000 - 12,000+/- SF



Available
 10,000 +/- sq. ft
 56' x 160'
 Available 2,000 sq. ft
 Drive Lane 20' x 100'

FOR OTHER LEASING OPPORTUNITIES
WashingtonStPartners.com



WASHINGTON ST. PARTNERS CORPORATE OFFICES
 120 E. Washington Street, Syracuse, NY 13202
 PH 315-426-2624 info@washingtonstpartners.com