



WASHINGTON ST. PARTNERS

NOW FOR SALE: JCC CONDO #402
JEFFERSON CLINTON COMMONS
Armory Square, Downtown Syracuse



2 bed, 2 bath Condominium 1,615 SF

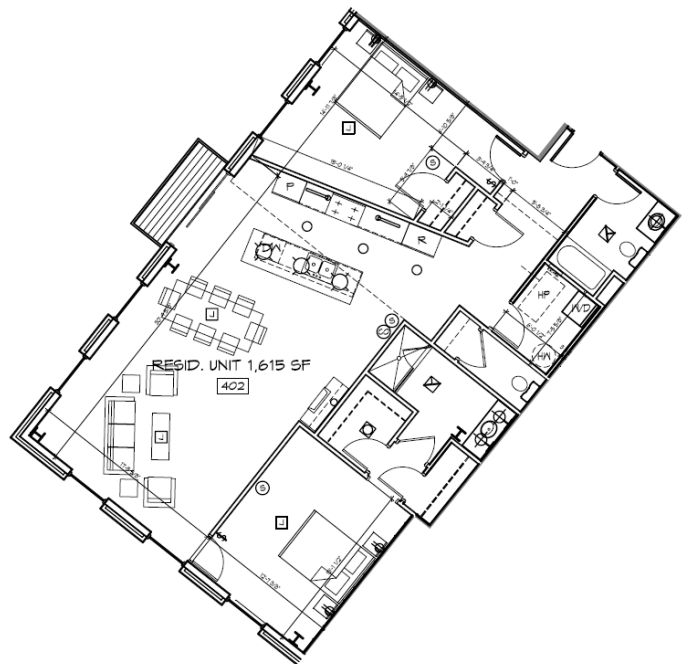


Property Features:

Beautiful condo in the Jefferson Clinton Commons Complex. Downtown/Armory square area location with 2 large bedrooms, 2 full baths and modern, high-end finishes. The space is complete with polished concrete flooring, stainless appliances, granite counters and private balcony. All within walking distance of restaurants, theaters, parks. Jefferson Clinton Commons is a unique blend in which to live and work.

ADDRESS 211 W. Jefferson St. #402
Syracuse, NY 13202

ASK PRICE: \$399,000



FOR OTHER REAL ESTATE OPPORTUNITIES
WashingtonStPartners.com



WASHINGTON ST. PARTNERS CORPORATE OFFICES
120 E. Washington Street, Syracuse, NY 13202
PH 315-426-2624 info@washingtonstpartners.com

NOW AVAILABLE: FOR SALE

Jefferson Clinton Commons Condo #402

Finish Information

Residential Unit Features

- Balcony with sliding doors
- Open floor plans
- Ceilings over 11 feet tall
- Large operable windows
- Super-high efficiency water source heat pump HVAC system:
- Solid core interior doors
- Gas fireplace
- Underground, secure garage parking
- Integrated security system

Master Bedroom:

- Polished concrete floors
- Walk in closet with custom shelving
- Master bath (see description)

Guest Bedroom:

- Polished concrete flooring
- Closet with custom shelving

Laundry / Storage Room:

- Stained and polished concrete flooring: Wire rack for storage
- Whirlpool front loading (stackable) washer and dryer included:

Kitchens: (All appliances meet Energy Star guidelines for energy efficiency)

- Viking Professional Series 36" stainless steel range: Viking Professional Series 36" stainless steel refrigerator/freezer: Viking stainless steel undercounter dishwasher
- Built-in stainless steel over-the-counter microwave
- Undercounter 30 bottle wine cooler; glass door and stainless-steel trim
- High power stainless steel, wall mount, chimney style range hood
- Deep bowl stainless steel double undermount sink
- Stained and polished concrete floor
- Brookhaven solid cherry or maple cabinets with soft close technology
- Custom granite countertops and island
- Garbage disposal

Master Bathroom:

- Ceramic tile flooring
- Granite countertops with undermount sink
- Brookhaven solid cherry or maple cabinetry; extra tall vanity height
- Walk-in tiled shower

Main Bathroom:

- Ceramic tile flooring
- Granite countertops with undermount sink
- Brookhaven solid cherry or maple cabinetry; extra tall vanity height
- Walk-in tiled shower

FOR OTHER REAL ESTATE OPPORTUNITIES
WashingtonStPartners.com



WASHINGTON ST. PARTNERS CORPORATE OFFICES
120 E. Washington Street, Syracuse, NY 13202
PH 315-426-2624 info@washingtonstpartners.com