



WASHINGTON ST. PARTNERS

NOW AVAILABLE: *Baldwinsville Village Commons*

Historically 100% Occupied Neighborhood Center in the Village of Baldwinsville

3,000 – 3,250 SF AVAILABLE



Location Description:

Existing fitness/wellness facility and unique mercantile in the Village of Baldwinsville, a vibrant, walkable community, it also represents a main thoroughfare (NYS Route 31). The Village Commons is located at 15 E. Genesee St. Baldwinsville, NY at the center of this thriving Village.

Property Features:

- Great visibility
- Generous signage
- Over 20,000 passing cars
- Over 260 parking spaces
- Leasing Incentives
- High Ceilings
- Divisible to suit
- Excellent Co-Tenancy

Availability Overview

3,250+/- sq. ft. Available
Building B – Retail, Office, Medical
3,000+/- sq. ft. Divisible
Mixed Use Mercantile

Tenant Listing:

- Empower FCU
- SNS WIRELESS
- KINNEY DRUGS
- Kelly Hamilton
- Lab Alliance
- Onondaga PT
- Miracle Nails
- Podiatry of CNY
- RMS
- Intelligent Query Engines

FOR OTHER LEASING OPPORTUNITIES
 WashingtonStPartners.com



WASHINGTON ST. PARTNERS CORPORATE OFFICES
 120 E. Washington Street, Syracuse, NY 13202
 PH 315-426-2624 info@washingtonstpartners.com

NOW AVAILABLE:

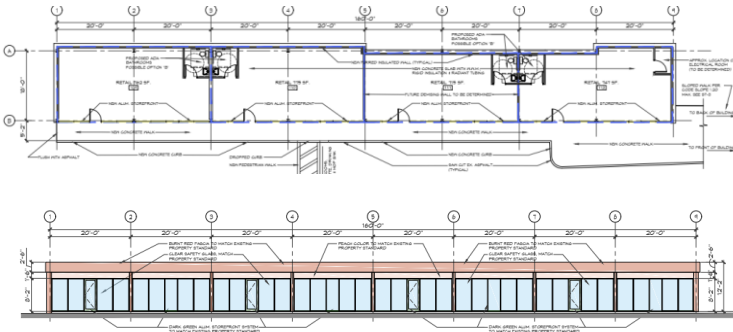
Baldwinsville Village Commons

Site Plan & Building Information



Mixed Use Mercantile

Building B



12 FRONT ELEVATION (SOUTH)
SCALE: 1/8"=1'-0"



Available Space 3,250+/- sq. ft.

Spring 2021

FOR OTHER LEASING OPPORTUNITIES
WashingtonStPartners.com



WASHINGTON ST. PARTNERS CORPORATE OFFICES
120 E. Washington Street, Syracuse, NY 13202
PH 315-426-2624 info@washingtonstpartners.com

NOW AVAILABLE:

Baldwinsville Village Commons

Location Map



FOR OTHER LEASING OPPORTUNITIES
WashingtonStPartners.com



WASHINGTON ST. PARTNERS CORPORATE OFFICES
120 E. Washington Street, Syracuse, NY 13202
PH 315-426-2624 info@washingtonstpartners.com